



# **EXARC**.net

## **SINCE 2001**

**... Where**

**Archaeological Open-Air Museums**

■ **Experimental Archaeology** ■

**Ancient Technology** ■ **Interpretation**

**Meet ...**

# EXARC

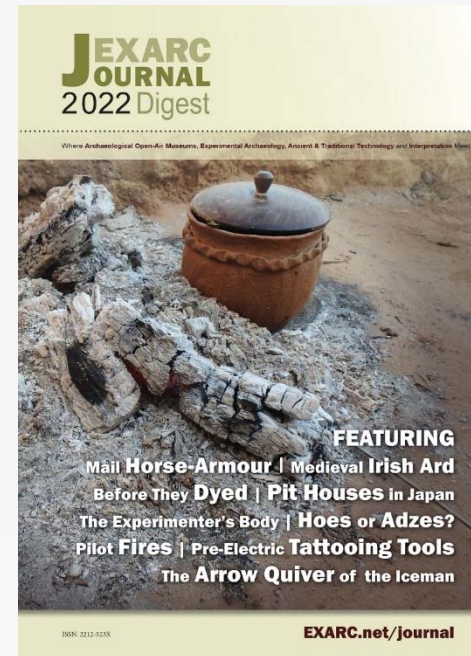
# 2023 Prospects





## PR & PUBLICATIONS

- ✓ We will publish one **Printed EXARC Journal Digest**, about 112 pages, and send it to our members around November. That will follow the same design as the previous ones.



## PR & PUBLICATIONS

- ✓ **Four online EXARC Journal Issues** are planned: February, June, August and November. We aim to publish about 60 articles. The last two years were more difficult to get articles, we hope 2023 will be a better year.
- ✓ We are planning to **update the website** making it more welcome for new members. Minimizing the content and grouping it with the EXARC vision in mind. This was supposed to happen in 2022.
- ✓ As in the previous years special attention will go the **Event Calendar**  
Please check: <https://exarc.net/events>
- ✓ We also reconsider designing a **flyer or brochure** about EXARC and its partners.



### PR & PUBLICATIONS

- ✓ We continue our monthly **Podcasts**, 10-11 per year. We have a dedicated group of volunteers for this.
- ✓ We support **RETOLD** partners with their PR products (vlogs, articles, banners – see next slide with “**Documenting Houses**”).
- ✓ We also cooperate with Leiden University in the “**Putting life into Late Neolithic houses**” project, where we help with videos and social media.





## DOCUMENTING HOUSES

### STEINZEITPARK DITHMARSCHEN

**PLAN / EXCAVATION**

The Pennigbüttel house was excavated in 1988 and dates to about 3,200 BC, the Neolithic Era. It measures about 11 x 6 metres.

The houses of Flögen (left) and Pennigbüttel (right) in the same size (after Assendorf 2000). We know very few houses from this period.

1999: Reconstruction of the Pennigbüttel house

**HOUSE OF PENNIGBÜTTEL**

This is one of the best excavated and documented houses of the middle Neolithic Era in Northern Germany. It was in these times that the impressive megalithic tombs were built. The Albersdorf region has some well preserved examples of tombs.

2019: After about 20 years we rebuilt the house. The roof partially collapsed at the rear of the house. When we tried to make it secure for the public again we learned that we needed to rebuild it completely.

2019: Reconstructed doors at the Pennigbüttel house

2022: We use the house model to demonstrate daily life and farming in the Neolithic 5,000 years ago.

Co-funded by the Creative Europe Programme of the European Union

RETOLD.EU

## DOCUMENTING HOUSES

### HOUSE FROM SÄCEL, MARAMUREȘ COUNTY

The house dates from the second half of the 19th century. It was transferred and rebuilt in the ASTRA Museum in 1968. It is part of a potter's house and workshop from Săcel's pottery centre. This is an area renowned for preserving old techniques for pressing clay and achieving pot impermeability, and preserving the old shapes of Dacian pottery.

1968: House from Săcel in situ

1968: Dismantling process of the house from Săcel

1968: Reconstruction in the ASTRA Museum of the house from Săcel

**PLAN**

The plan shows the archaic type of building, without a porch, with three rooms:

- a hall (5,20 x 3,40 m),
- a pantry (5,20 x 1,10 m),
- a living quarters (5,20 x 3,30 m).

The house has one floor.

2022: The reconstructed potters Workshop from Săcel in the ASTRA Museum today

Co-funded by the Creative Europe Programme of the European Union

RETOLD.EU

## DOCUMENTING HOUSES

### STIFTUNG STADTMUSEUM BERLIN

#### HOUSE 14 MUSEUM VILLAGE DÜPPEL

Based on one of the best preserved floor plans excavated at the medieval settlement in Berlin-Zehlendorf. The excavation plan showed a post-construction with split plank walls and a hearth, as discoloration is in the soil. All above ground features did not survive. The house model is therefore just one possible interpretation of reconstructing the evidence found in the ground.

Late 1960's: Photo from the excavation with added plan of the excavated house (Source: Landesdenkmalamt Berlin)

1970's: Building the first archaeological house model (Source: Landesdenkmalamt Berlin)

1970's: Drawing of the planned archaeological house reconstruction (Source: Förderverein Museumsdorf Düppel e.V.)

**PLAN**

The first reconstruction had to be closed to the public in 1998 as the posts had rotted away and the roof was sagging. It was re-built in 1999 and is still in use today. See the floor plan of the current reconstruction (Source: Stadtmuseum Berlin)

2023: Rendering of 3D-Scan from inside (Source: HTW Berlin)

2019: Rendering of 3D-Scan from the outside (Source: HTW Berlin)

Co-funded by the Creative Europe Programme of the European Union

RETOLD.EU

## CONFERENCES & MEETINGS

- ✓ January: **European Archaeology Days** Forum in Paris, France
- ✓ March: **RETOLD meeting** at ASTRA Museum, Sibiu, Romania (moved from 2022)
- ✓ May: **Experimental Archaeology Conference #EAC13**, Toruń, Poland (hybrid conference)
- ✓ Autumn: **RETOLD meeting** at Steinzeitpark Dithmarschen, Albersdorf, Germany



## COOPERATIONS

EXARC is partner in two cooperation projects:



DOCUMENTATION DIGITISATION SHARING

- ✓ **RETOLD** is the project we are lead partner of, with 5 other members we work on documentation strategies for open-air museums.  
[www.RETOLD.eu](http://www.RETOLD.eu)



- ✓ **The NWO project (Putting Life into late Neolithic Houses)** where we help with dissemination of the message and to bring more awareness about the projects and its questions. **Leiden University** is coordinating this project.  
<https://www.puttinglife.com>



## COOPERATIONS

- ✓ After a successful 2021 and 2022 awards, we hope to continue with the **EXARC Experimental Archaeology Award**, sponsored by John Kiernan.
- ✓ EXARC has teamed up with the YEAR Centre (UK) and Ukraine based ancient craft expert and EXARC member Yarema Ivantsiv - to create a **Support Ukraine Network (SUN)**.
- ✓ After one year of break we would like to continue with the **Colonial Williamsburg Foundation – EXARC Fellowship**



## COOPERATIONS

- ✓ In 2022 we got accepted as new members of the **European Heritage Alliance 3.0**
- ✓ EXARC is an affiliated organisation to **ICOM - the International Council of Museums**
- ✓ We are member of **NEMO - Network of European Museum Associations**
- ✓ **IMTAL EUROPE** – International Museum Theatre Alliance
- ✓ **ALHFAM**, the Association of Living History, Farming and Agriculture Museums
- ✓ **AIMA**, which is the International Association of Agricultural Museums
- ✓ **European Archaeology Days** which are coordinated by **INRAP**



## OFFICE & SECRETARIAT

- ✓ Since January 2023 **Magdalena Zielińska** (office manager) and **Roeland Paardekooper** (director) are responsible again for the main tasks including the external projects (RETOLD and “Putting Life”).
- ✓ The group of volunteers remains stable, including two moderators for podcasts, one bookkeeper, one social media coordinator, and one general digital /website support, and several video editors.
- ✓ Next to it we have separate editors and reviewers' team under the supervision of our editor-in-chief **J. Katerina Dvoráková**.

# **FINANCES**

## **2021-2024**



EXPENDITURE	2021	2022	2023	2024	2025
Staff	€ 28.722	€ 21.635	€ 22.690	€ 20.266	
Staff RETOLD	€ 11.648	€ 11.052	€ 15.383	€ 13.157	
Conference and Seminars	€ 2.985	€ 75	€ 8.215	€ 2.450	
Conference RETOLD					
PR Products	€ 3.063	€ 3.344	€ 3.705	€ 3.850	
PR Website	€ 163	€ 174	€ 2.350	€ 350	
PR RETOLD	€ 403	€ 402	€ 6.201	€ 5.536	
Postage	€ 1.907	€ 1.979	€ 2.525	€ 2.625	
Office costs	€ 4.458	€ 3.794	€ 4.489	€ 3.620	
Indirect Cost RETOLD	€ 855	€ 1.071	€ 1.773	€ 2.400	
Accountant	€ 1.858	€ 2.176	€ 350	€ 2.500	
Audit RETOLD	€ 160	€ 3.025	€ 2.000	€ 3.815	
Travels / external contacts	€ 445	€ 1.187	€ 4.000	€ 4.000	
Travels RETOLD	€ 0	€ 828	€ 1.750	€ 9.332	
Other	€ 267	€ 390	€ 500	€ 500	
Costs Bank	€ 636	€ 492	€ 650	€ 600	
<b>TOTAL EXPENDITURE</b>	<b>€ 57.568</b>	<b>€ 51.625</b>	<b>€ 76.581</b>	<b>€ 75.002</b>	

INCOME	2021	2022	2023	2024	2025
Donations	€ 90	€ 95	€ 100	€ 100	
Contributions	€ 34.510	€ 35.630	€ 35.000	€ 36.500	
Adverts	€ 600	€ 200	€ 500	€ 500	
Sales	€ 109	€ 219	€ 300	€ 300	
Conference and Seminars	€ 14.189	€ 1.500	€ 17.175	€ 0	
Income Bank	€ 649	€ 618	€ 700	€ 650	
RETOLD	€ 12.500	€ 12.500	€ 12.500	€ 14.208	€ 22.161
Other Grants	€ 4.613	€ 3.200	€ 3.200	€ 4.000	€ 2.400
EU CRAFTER					
NET TURNOVER EXARC	€ 67.260	€ 53.962	€ 69.475	€ 56.258	
BALANCE	€ 9.692	€ 2.337	-€ 7.106	-€ 18.743	
ACCUMULATED RESERVES	€ 24.651	€ 34.343	€ 36.680	€ 29.574	
TOTAL RESERVES	€ 34.343	€ 36.680	€ 29.574	€ 10.831	



- ✓ The RETOLD project will only be finalised after we submit reporting in 2024 which means **we need to pay about 30% of the costs in advance**. That counts also for the “Putting life” project (the EXARC reserves in 2024 will drop to around 10.000 EUR).
- ✓ Since January 2021 we have a part time employee to help with all the projects as well as volunteers and Social Media. We also have many volunteers to whom we can offer a volunteer fee from the income of the conferences as well as for the RETOLD project.

# THANK YOU