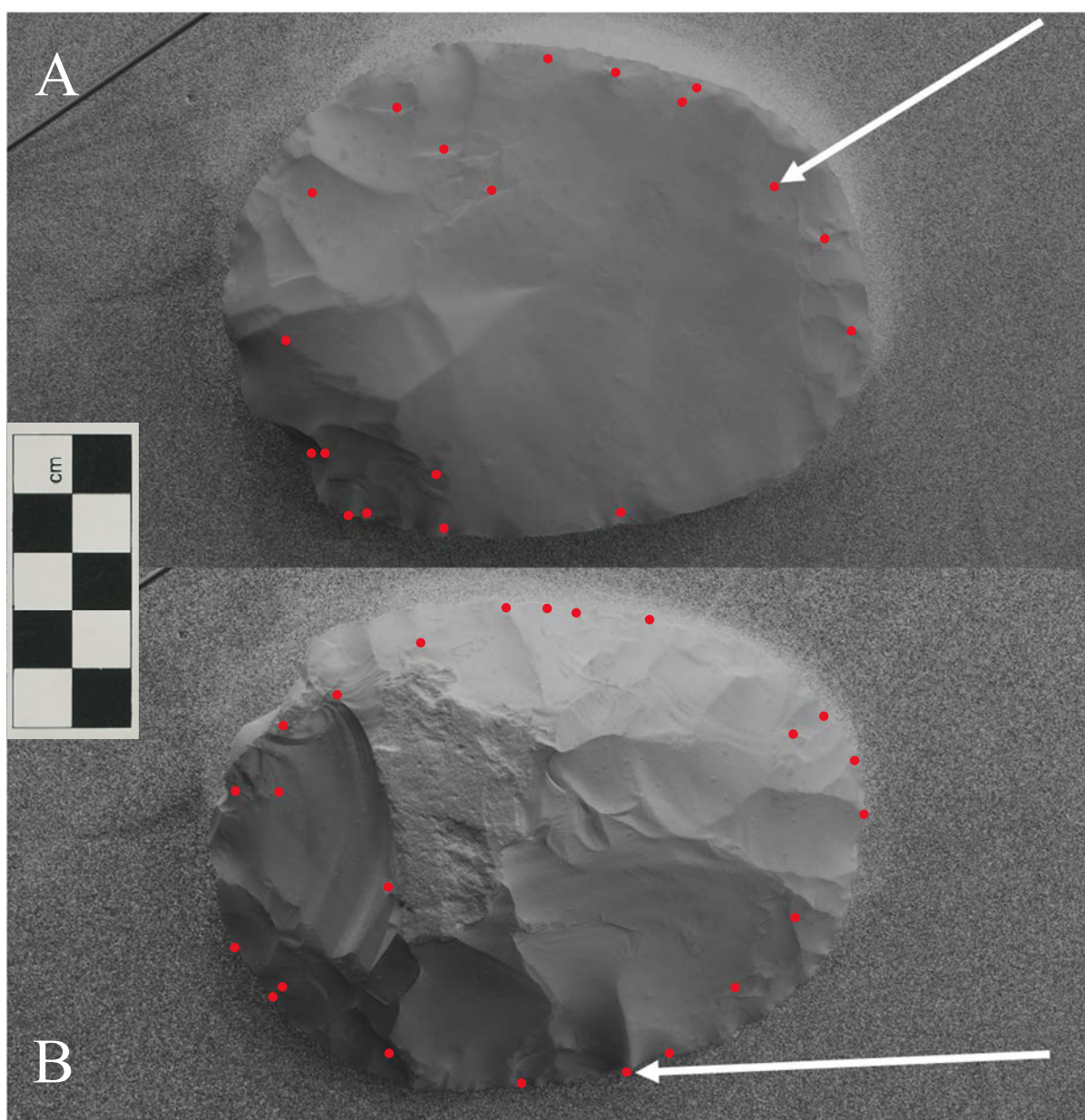


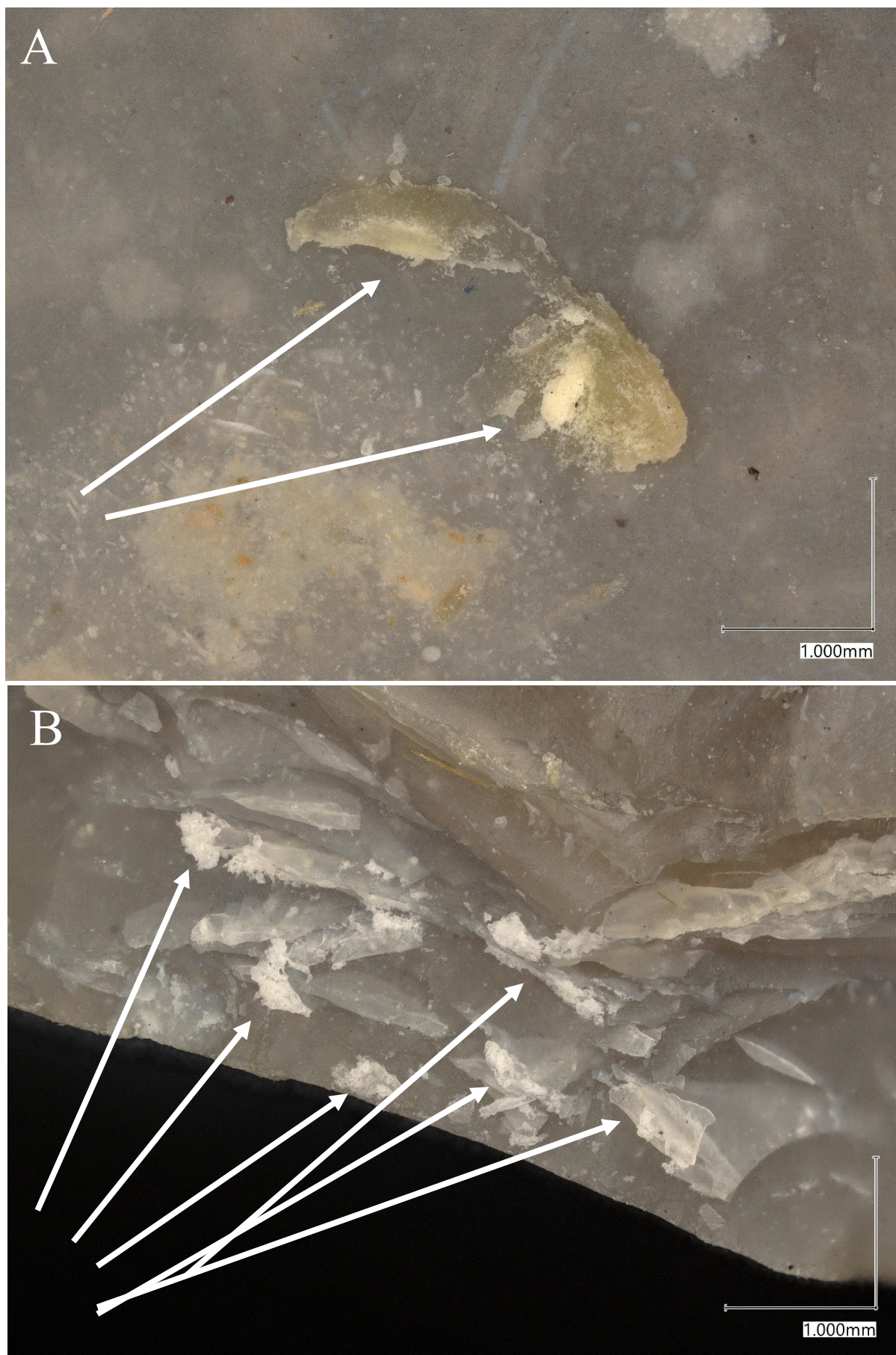
Supplementary Information 1: Microscopic Data

Biface #01 (water)

As illustrated in *Supplementary Figures 1.0* and *1.1*, at least 43 sites on biface #01 have retained biological matter after the decontamination procedure. This supports the inference that the *water* treatment cannot adequately decontaminate a bifacial tool which has been utilised for butchery tasks.



Supplementary Figure 1.0: The digital map of biface #01, showing face A (top) and face B (bottom). Red dots mark biological matter sites. Arrow points to the example image for either face. (Source: Whitehead).



Supplementary Figure 1.1: Photographic example of biological matter on either face of biface #01. Arrows point to deposits of biological matter. Scale on the bottom right-hand corners. (Source: Whitehead).