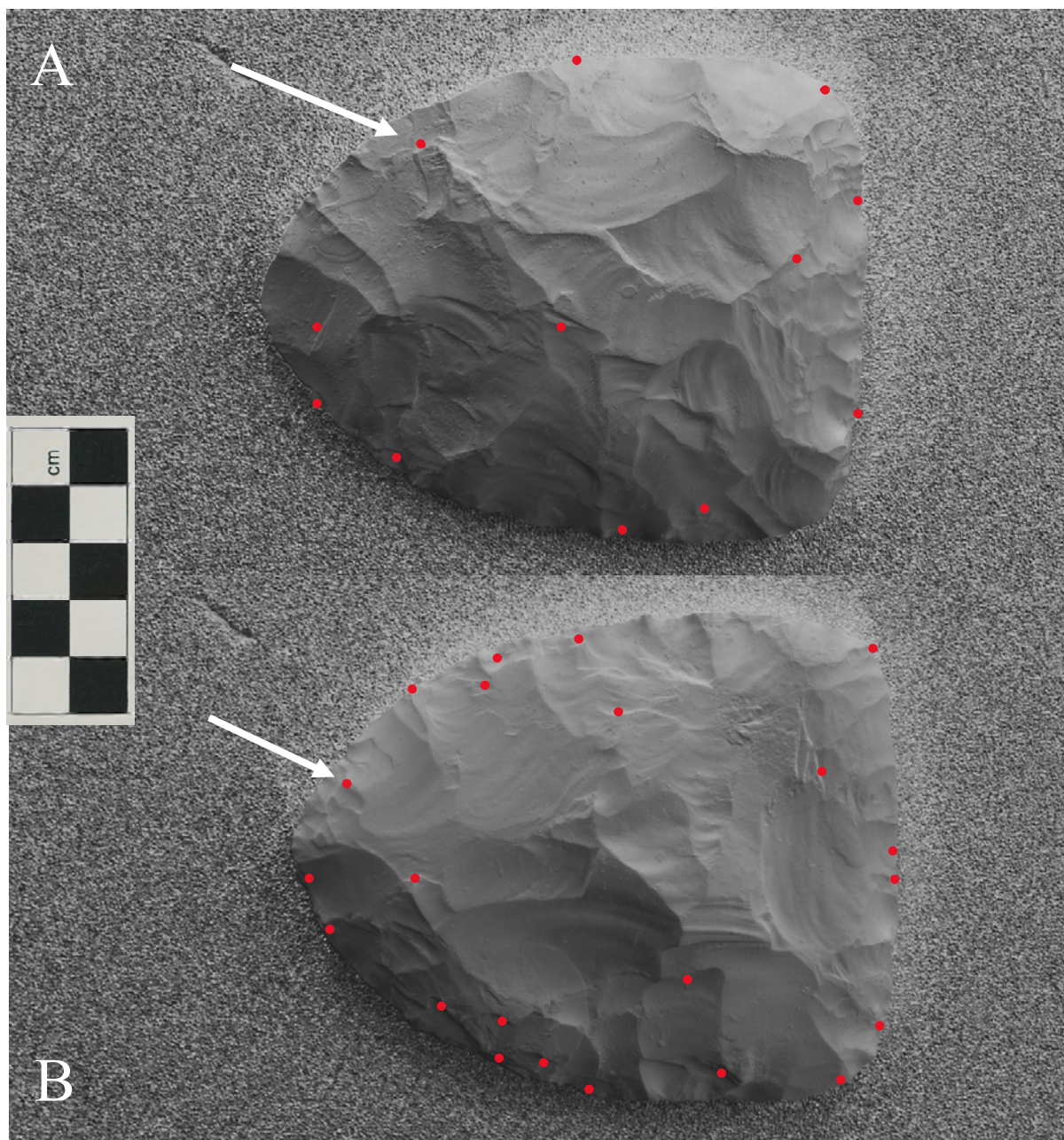
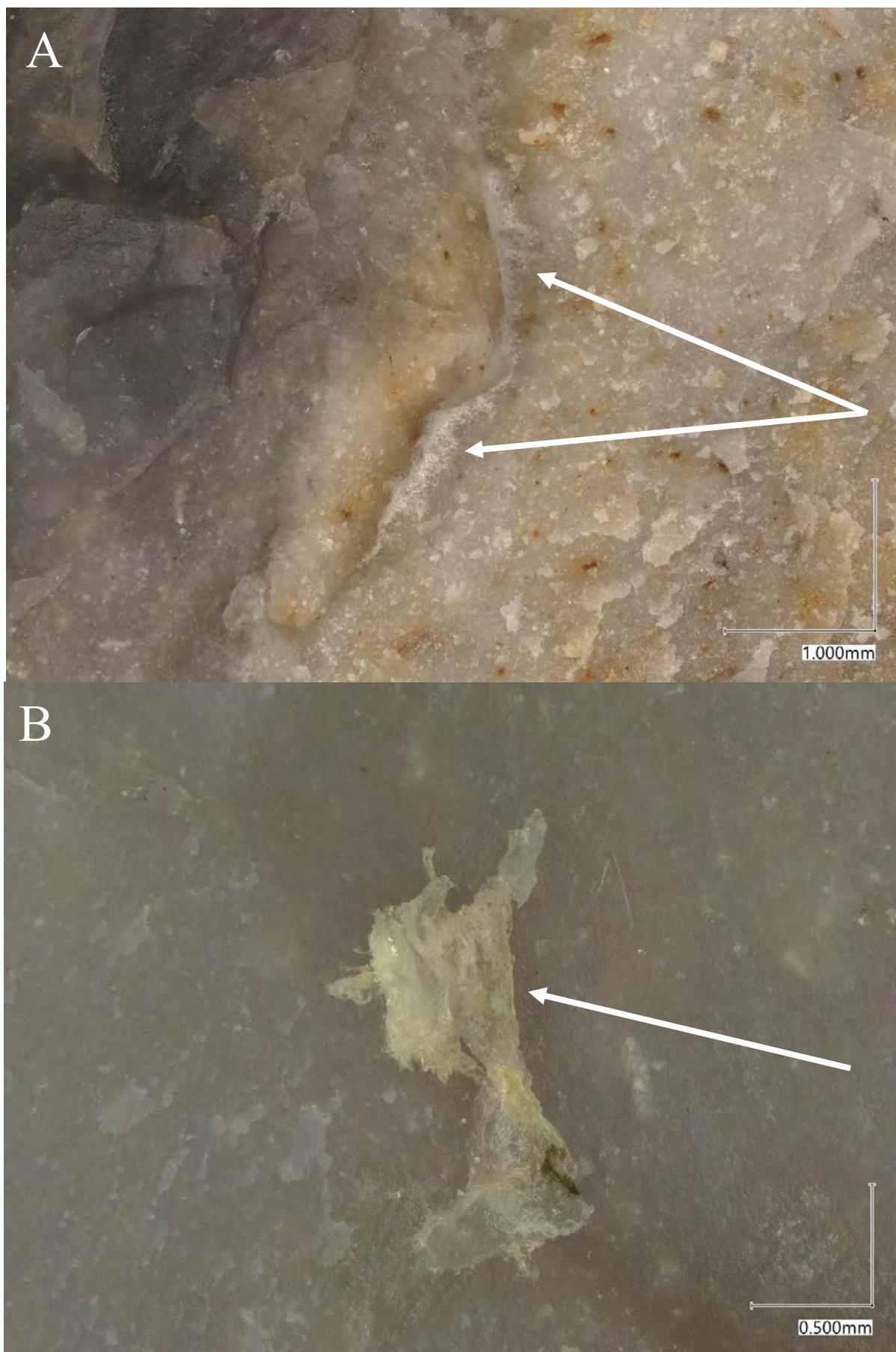


Biface #02 (water)

As illustrated in *Supplementary Figures 2.0* and *2.1*, at least 38 sites on biface #02 have retained biological matter after the decontamination procedure. This suggests that the *water* treatment method cannot adequately decontaminate a bifacial tool which has been utilised for butchery tasks.



Supplementary Figure 2.0: The digital map of biface #02, showing face A (top) and face B (bottom). Red dots mark biological matter sites. Arrow points to the example image for either face. (Source: Whitehead).



Supplementary Figure 2.1: Photographic example of biological matter on either face of biface #02. Scale on the bottom right-hand corners. (Source: Whitehead).