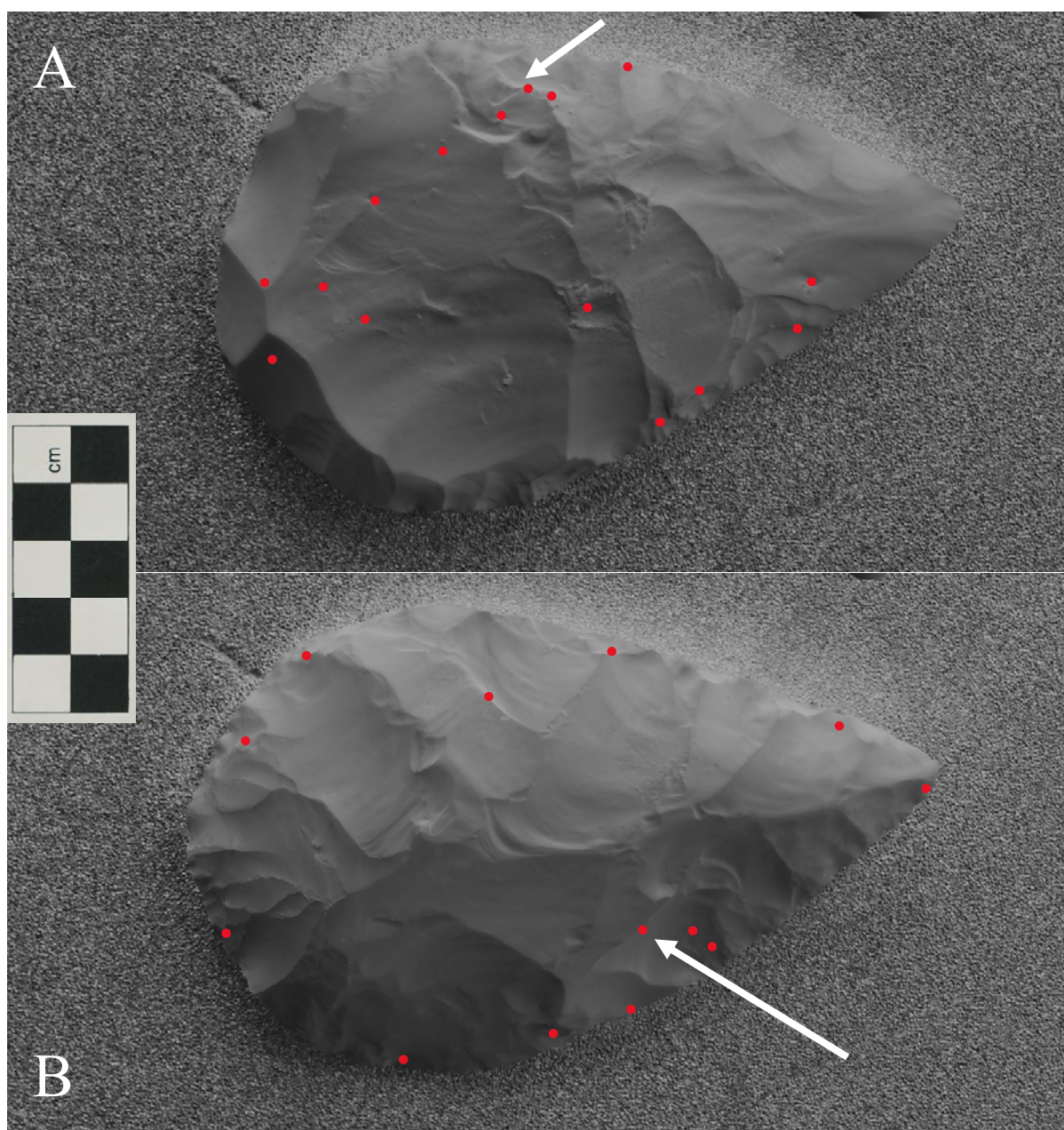


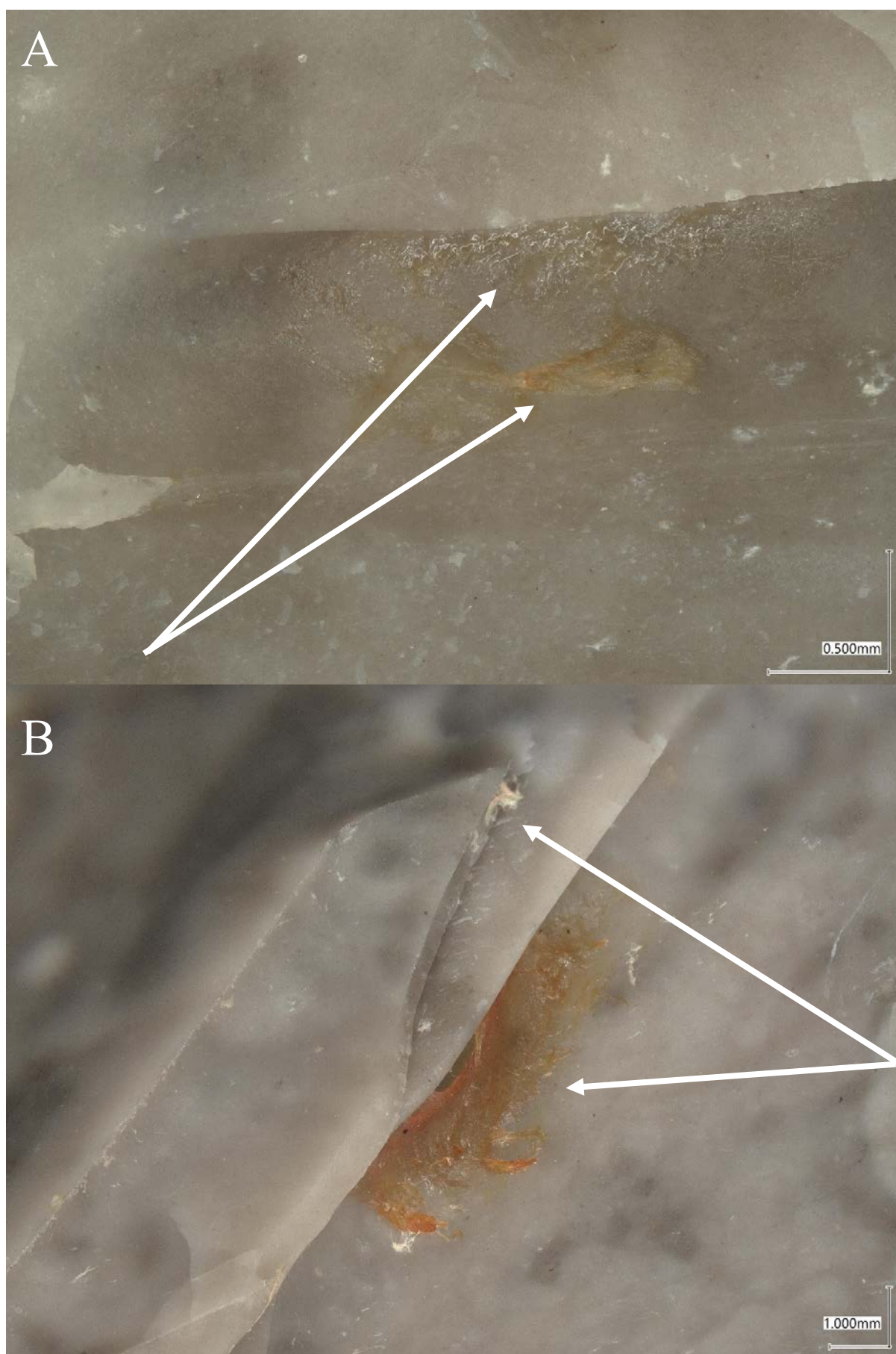
## *Biface #05 (soapwort)*

As illustrated in *Supplementary Figures 5.0* and *5.1*, at least 28 sites on biface #05 have retained biological matter after the decontamination procedure. This supports the inference that the *soapwort* treatment cannot adequately decontaminate a bifacial tool which has been utilised for butchery tasks.

Despite being manufactured from the same English flint as the result of the dataset, Biface #05 contains an unusually high frequency of pores within its surface which have each retained biological matter, in addition to the other micro-niches.



*Supplementary Figure 5.0: The digital map of biface #05, showing face A (top) and face B (bottom). Red dots mark biological matter sites. Arrow points to the example image for either face. (Source: Whitehead).*



*Supplementary Figure 5.1:* Photographic example of biological matter on either face of biface #05. Scale on the bottom right-hand corners. (Source: Whitehead).