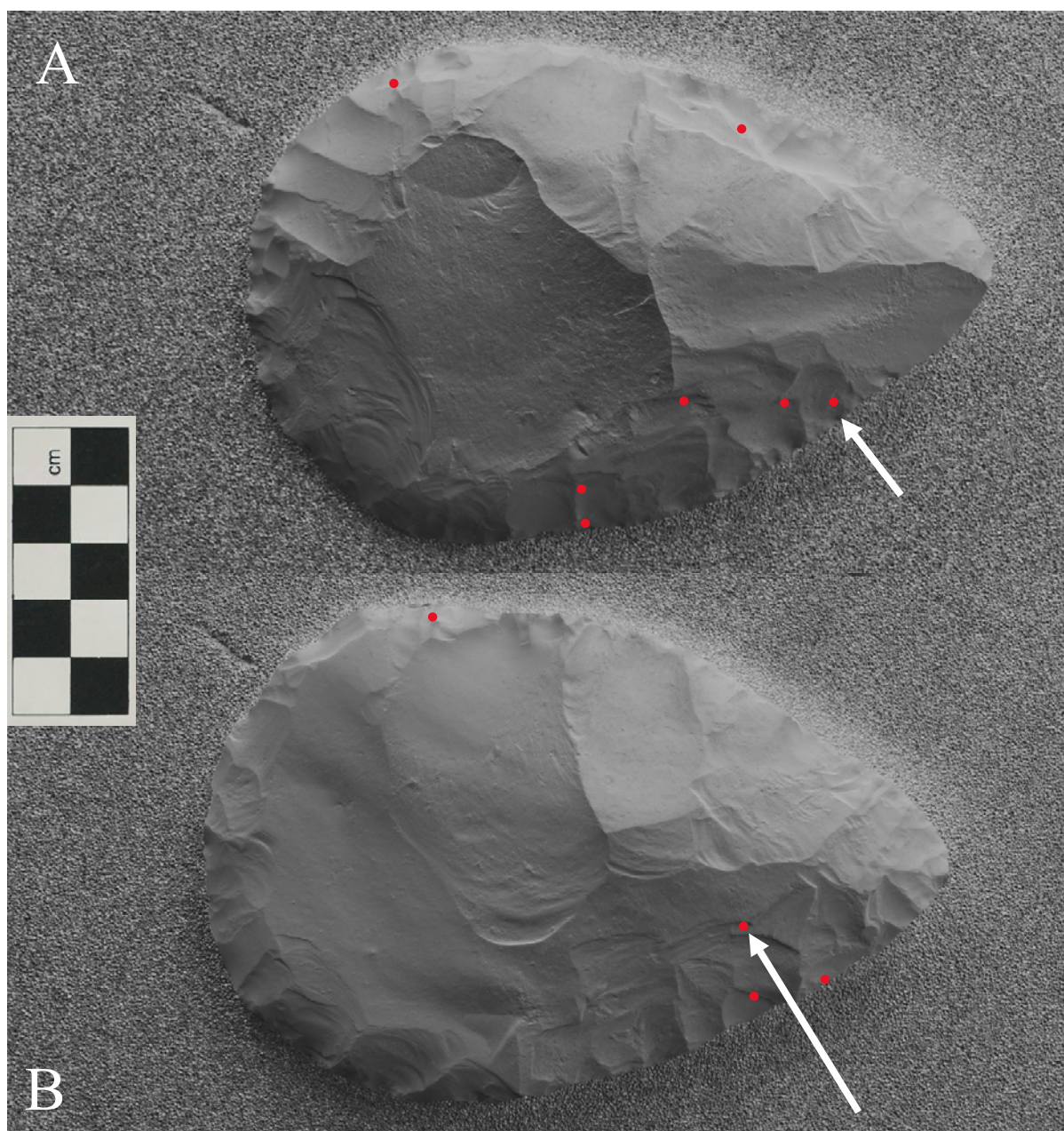
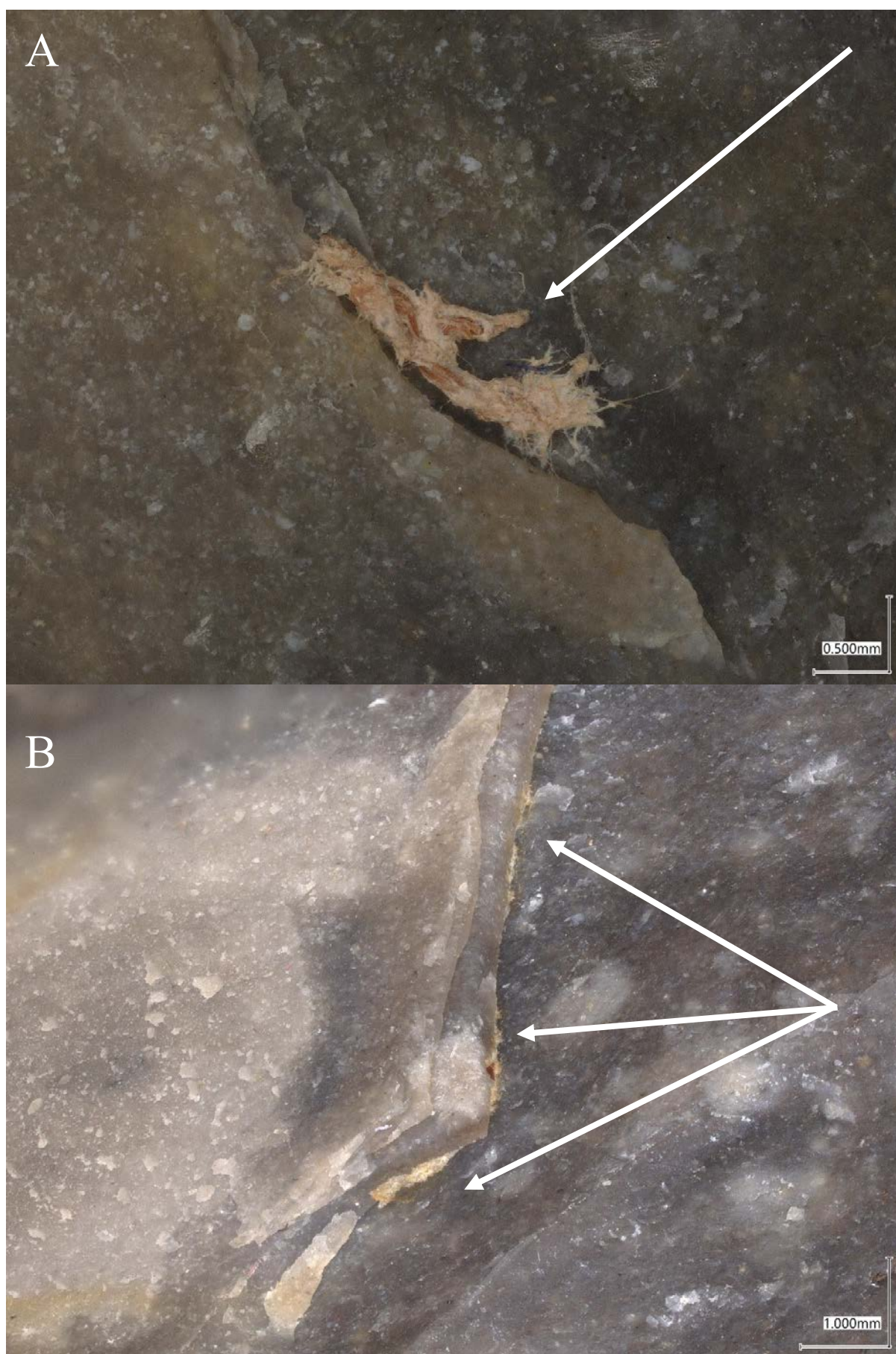


Biface #06 (soapwort)

As illustrated in *Figures 6.0* and *6.1*, at least 11 sites on biface #06 have retained biological matter after the decontamination procedure. This supports the inference that the *soapwort* treatment cannot adequately decontaminate a bifacial tool which has been utilised for butchery tasks.



Supplementary Figure 6.0: The digital map of biface #06, showing face A (top) and face B (bottom). Red dots mark biological matter sites. Arrow points to the example image for either face. (Source: Whitehead).



Supplementary Figure 6.1: Photographic example of biological matter on either face of biface #06. Scale on the bottom right-hand corners. (Source: Whitehead).