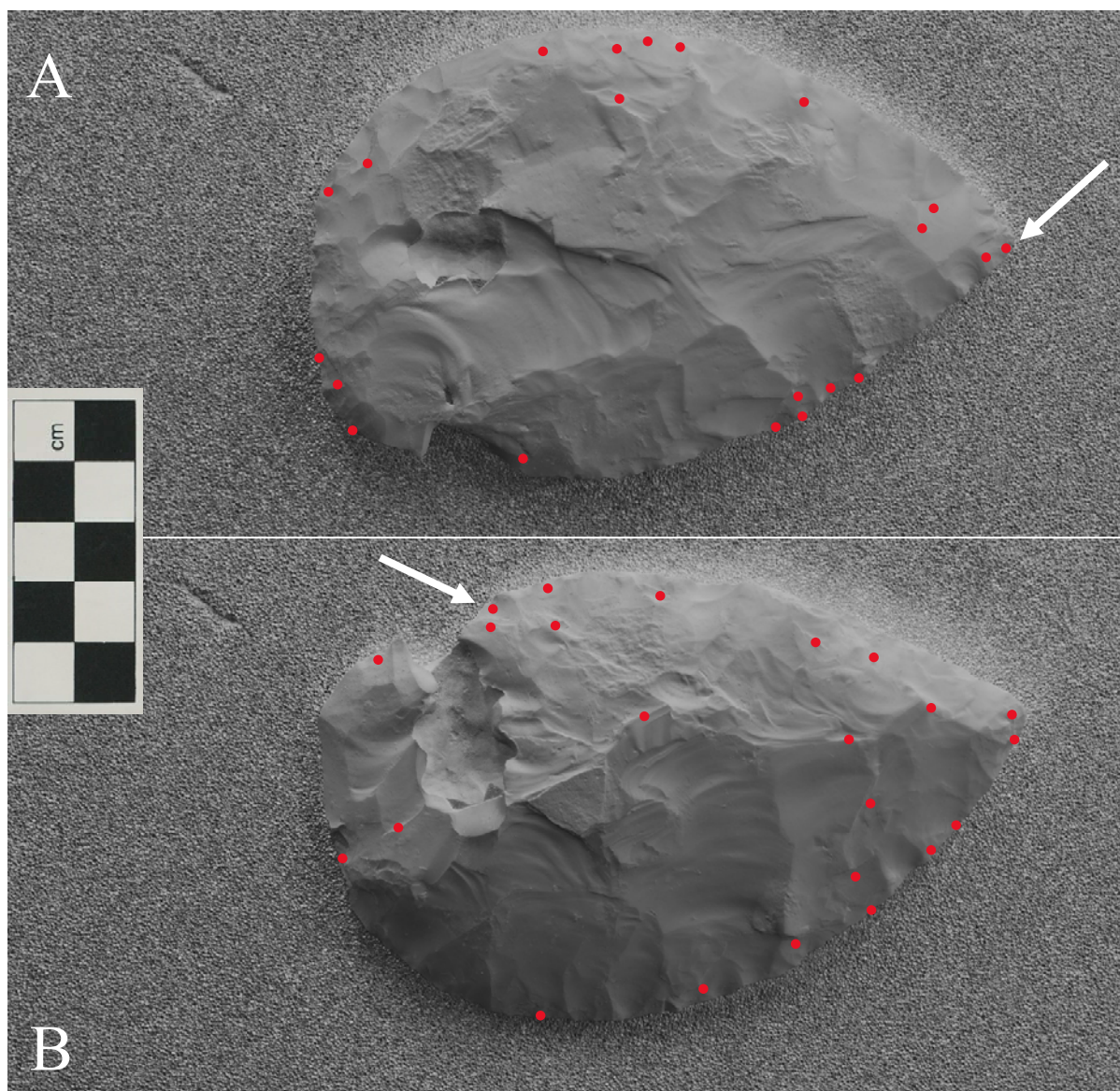
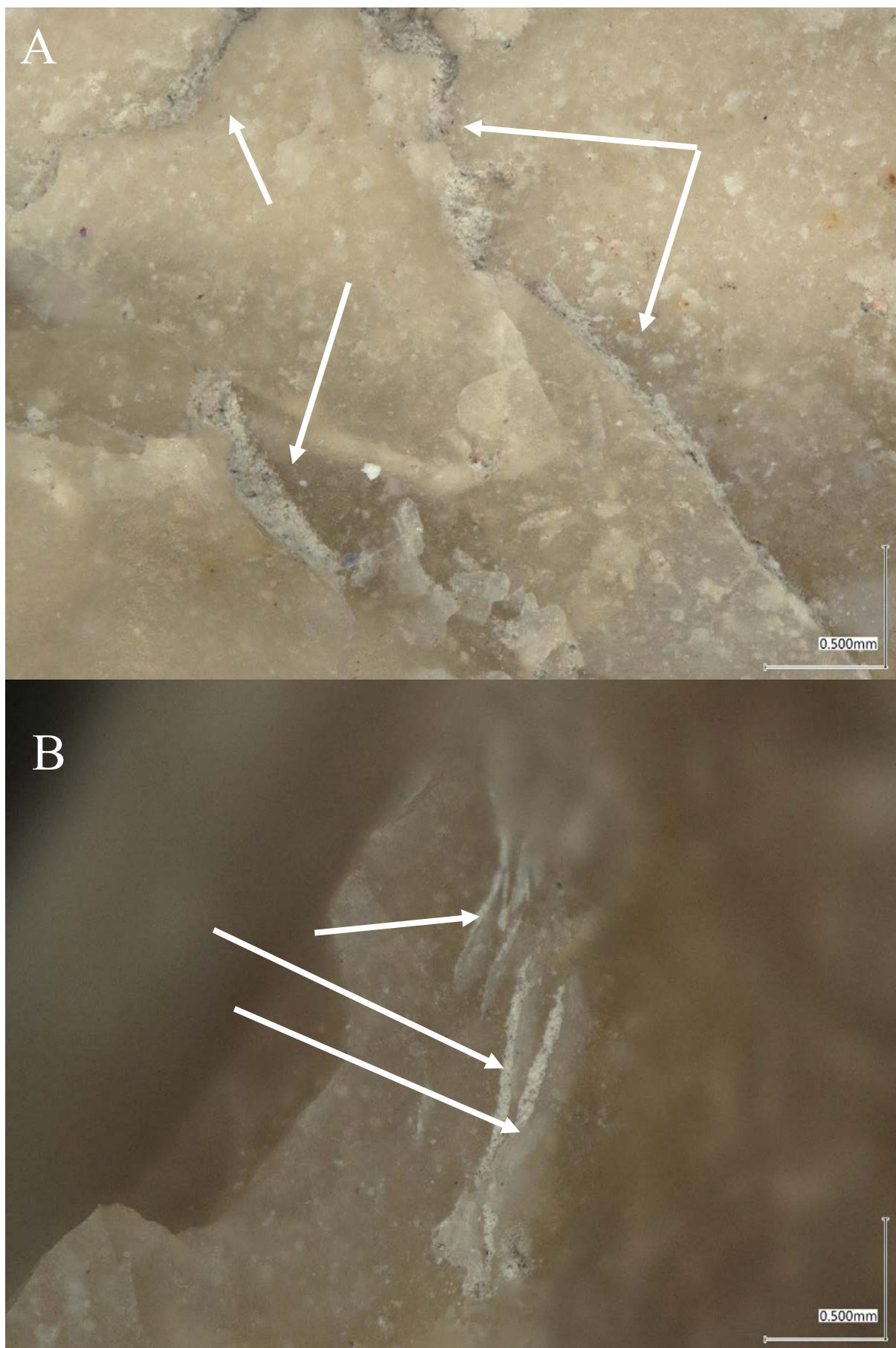


Biface #07 (ash)

As illustrated in *Supplementary Figures 7.0* and *7.1*, at least 42 sites on biface #07 have retained ash after the decontamination procedure. This supports the inference that the *ash* treatment is ineffective at completely decontaminating a bifacial tool, as the ash becomes trapped in the niches, creating significantly more contamination sites than were originally present.



Supplementary Figure 7.0: The digital map of biface #07, showing face A (top) and face B (bottom). Blue dots mark biological matter sites. Arrow points to the example image for either face. (Source: Whitehead).



Supplementary Figure 7.1: Photographic example of biological matter on either face of biface #07. Scale on the bottom right-hand corners. (Source: Whitehead).