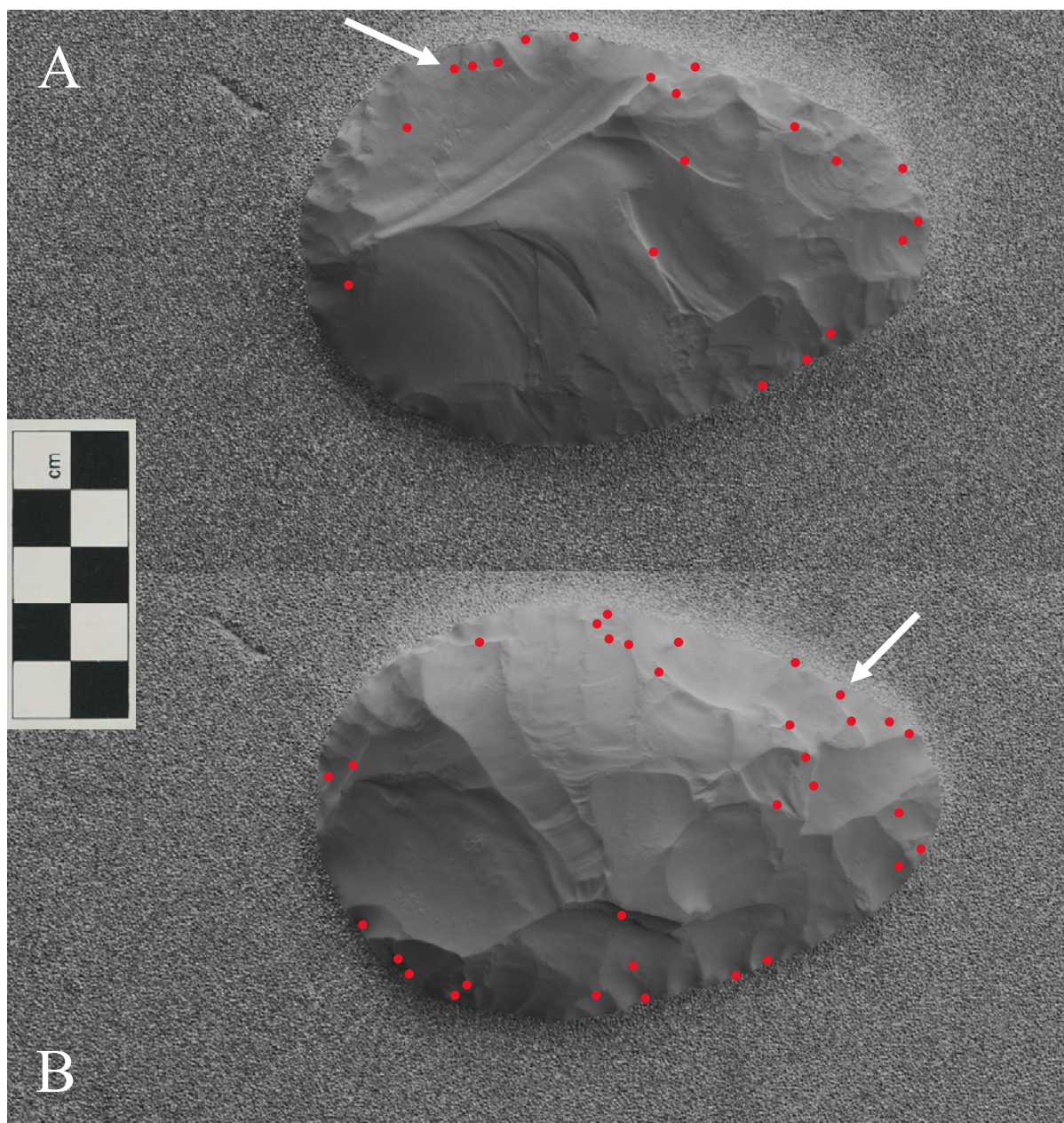
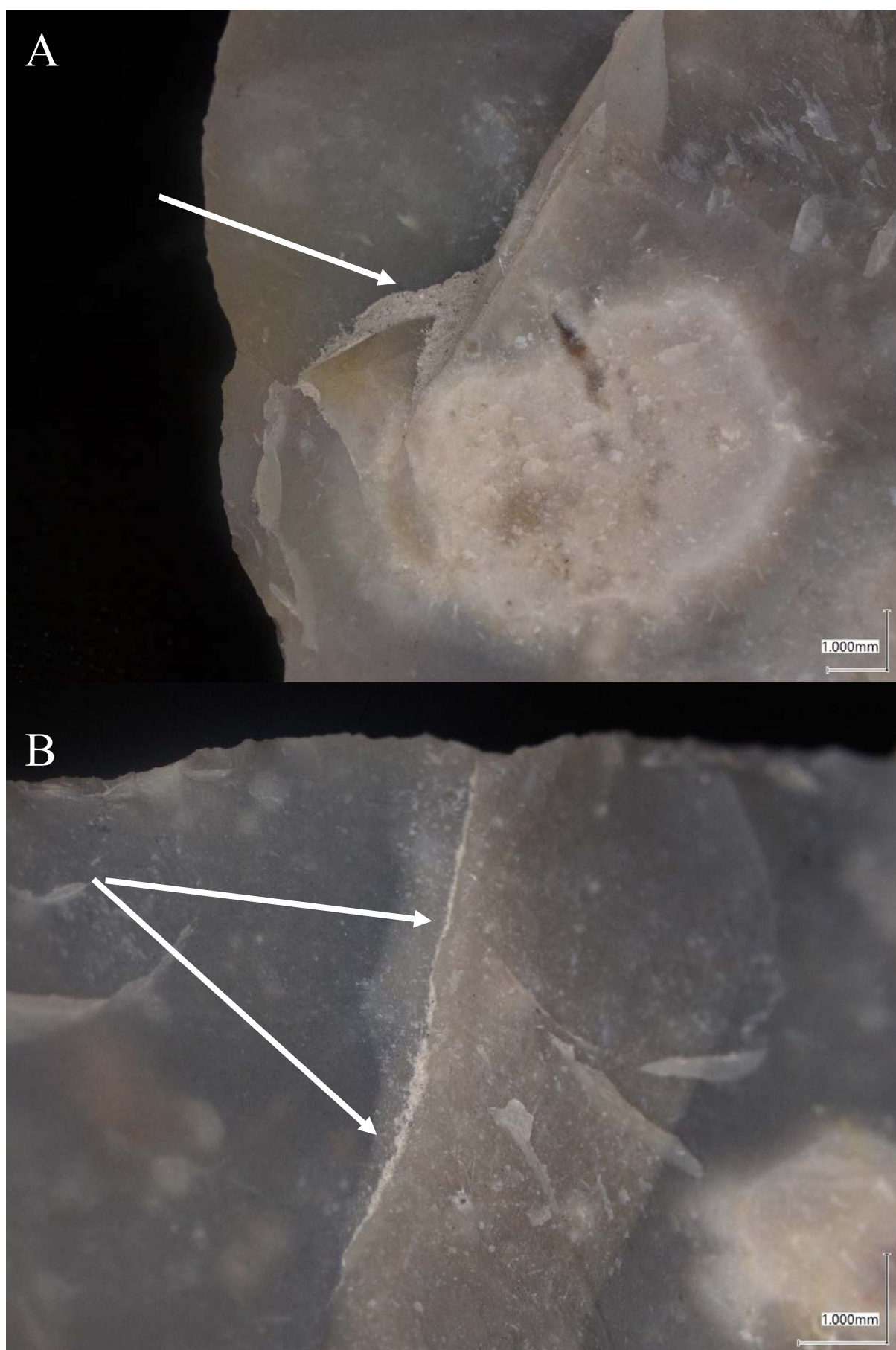


Biface #08 (ash)

As illustrated in *Supplementary Figures 8.0* and *8.1*, at least 50 sites on biface #08 have retained ash after the decontamination procedure. This supports the inference that the *ash* treatment is ineffective at completely decontaminating a bifacial tool, as the ash becomes trapped in the niches, creating significantly more contamination sites than were originally present.



Supplementary Figure 8.0: The digital map of biface #08, showing face A (top) and face B (bottom). Red dots mark ash contamination sites. Arrow points to the example image for either face. (Source: Whitehead).



Supplementary Figure 8.1: Photographic example of ash contamination on either face of biface #08. Scale on the bottom right-hand corner. (Source: Whitehead).